

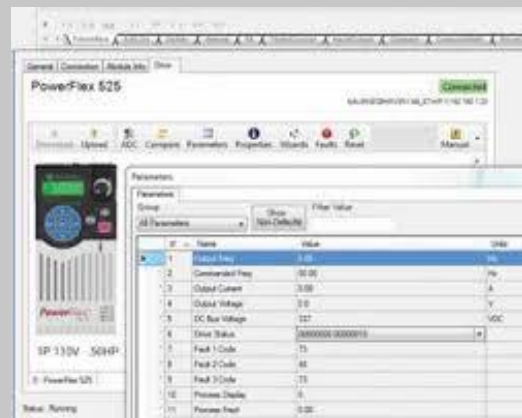
Variable Speed Drives

PowerFlex 525

This course introduces the fundamental topics of variable speed drives using the PowerFlex 525 drive. The instructor guided information along with hands-on activities allow participants to immediately utilize the newly developed skills. Topic coverage will allow participants to perform installation and wiring tasks, in addition to drive configuration. Participants will also utilize available software for configuration of the drives.



- Variable Speed Drive Hardware
- Terminology
- Electrical Supply Connections
- Motor Wiring Connections
- Drive Basic Parameters
- External I/O Wiring
- Pushbutton Control Circuits
- Relay Outputs
- Advanced Parameters
- Analog Control
- Network Connections
- Software Setup and Operation



Course Length: 1.5 Days

Prerequisites: No prerequisites however an understanding of electrical control devices is recommended.

For more information contact us at www.intktrain.com