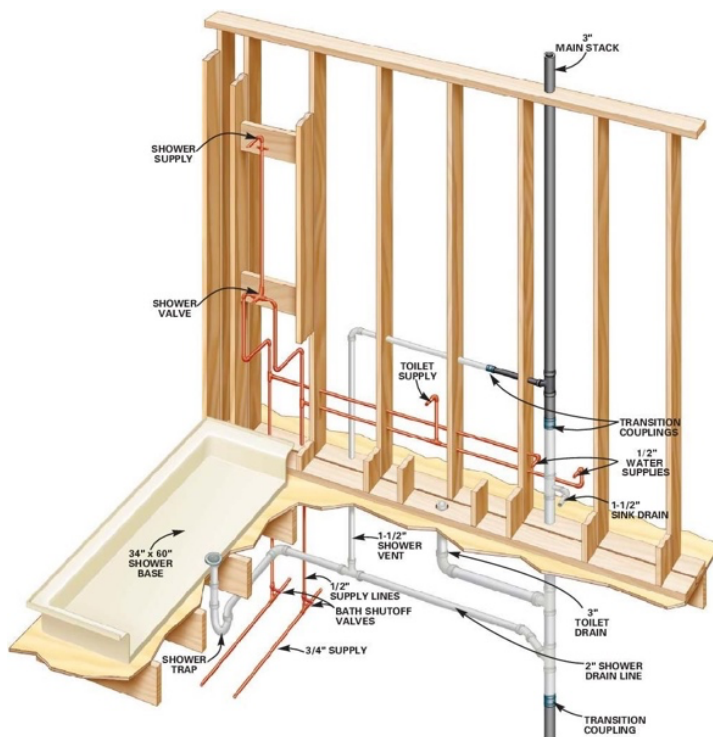


The **PLMB-200 Series** Training system provides participants with hardware allowing for installation, and connection of various residential plumbing fixtures and devices. This system gives access to onboard components simulating real world installations. The 200 series includes 3 different units which can be used individually or connected together for whole house connectivity.

- **PLMB-201 – Utility Room System**
 - Water Heater Installation
 - Water Service/Distribution Installation
 - Clothes Washer Plumbing and Drain Installation
- **PLMB-202 – Bathroom System**
 - Lavatory Installation
 - Toilet Installation
 - Shower Installation
- **PLMB-203 – Kitchen System**
 - Sink Installation
 - Dishwasher Installation (Simulated)
 - Garbage Disposal Installation
 - Ice Maker Supply Installation



Topic Coverage Includes:

- Plumbing Drawings
- Piping Types and Sizing
- Trunk Line and Branch Supplies
- Drain Waste and Vent Systems
- Air Chambers for Shock Absorption
- PVC and CPVC Installations
- PEX Piping Installation
- Copper Piping Installation
- Vanity Sink Fixture Installation
- Kitchen Sink Fixture Installation
- Toilet Fixture Installation
- Tub and Shower Fixtures
- Pressure Testing

For more information contact your local Innotek distributor, or visit us at www.intktrain.com